

# Tamarisk® 320 Camera Control and Capture Guide.

---

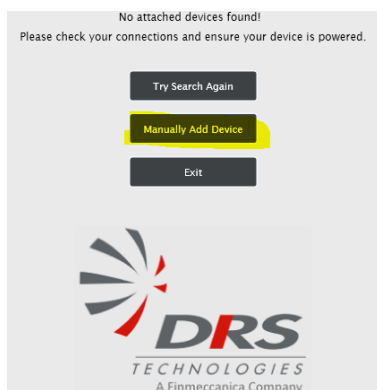
*Muhammad Imran  
Mid Sweden University, Sweden.*

## Tamarisk 320 Camera control Guide.

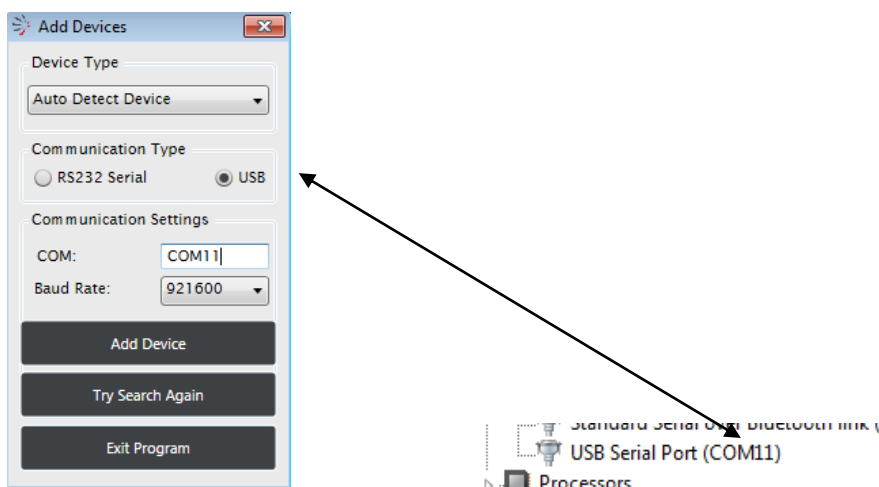
The procedure is well documented in “Tamarisk 320 Camera Control Software User Guide”. However, this is a quick guide. I used DRS technology software for controlling the camera functionality and used video easy TERRATEC edition for capturing videos.

Step by step procedure for using DRS control software.

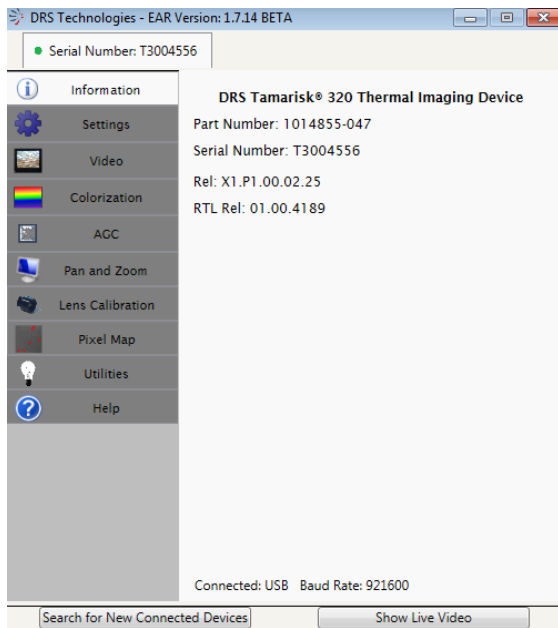
1. Click manually add device.



2. While the USB for control purpose, set the COM port according to your setting and then select baud rate to 921600. Click add device. You can also control camera with Rs232 serial interface. The detail is given in the camera guide.



3. You get this panel for controlling the camera



4. The window of MAGIX Video easy TERRATEC Edition would look like this. The video format you have selected in the control software needs to be selected in capturing software.

